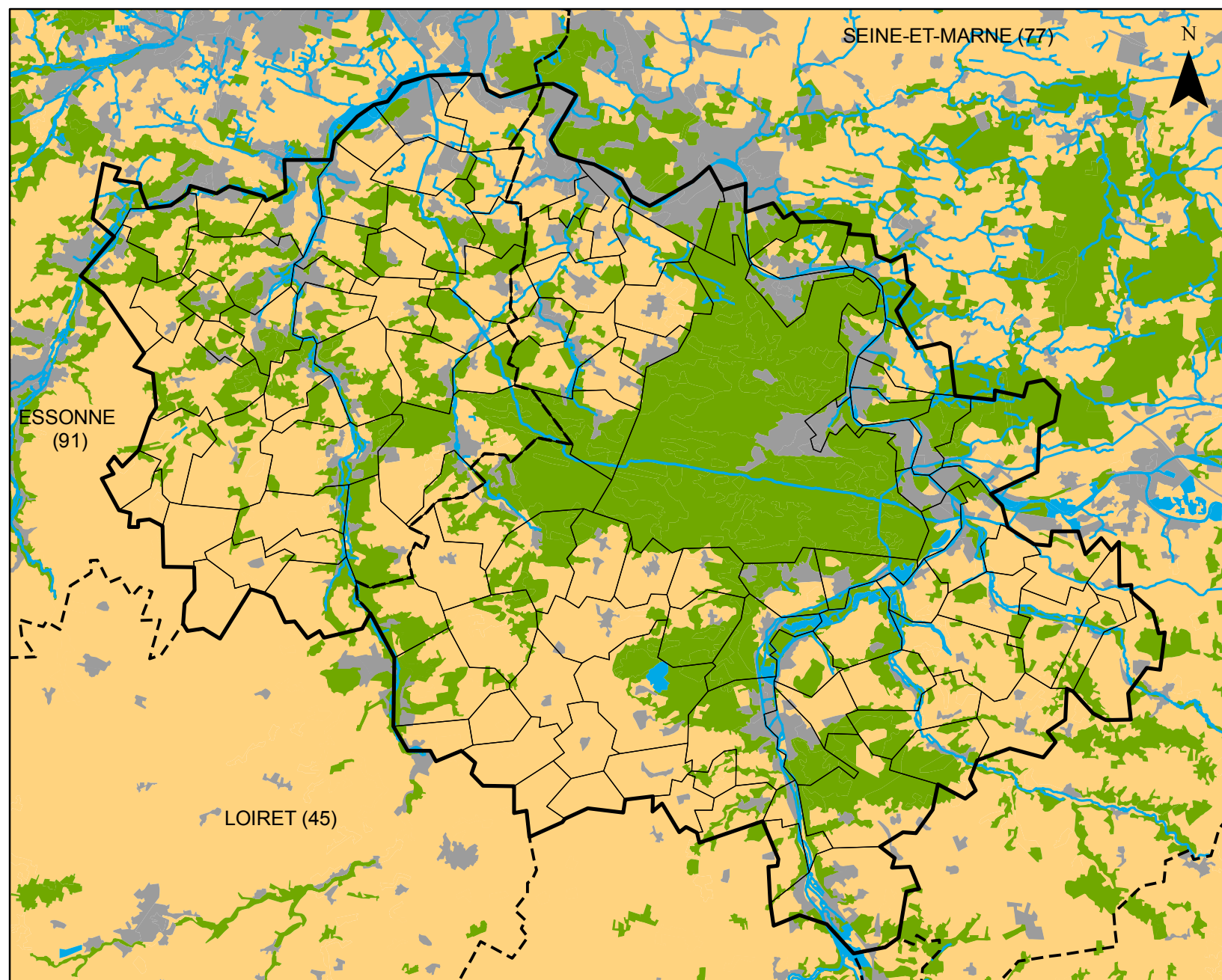







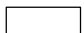


Occupation du Sol de la réserve de biosphère de Fontainebleau et du Gâtinais (2006)



Mode d'occupation du sol

-  Territoires artificialisés
-  Territoires agricoles
-  Forêts et milieux semi-naturels
-  Zones humides et surfaces en eau

Limites et réseau

-  Limites départementales
-  Limites communales
-  Limite de la RBFG
-  Réseau hydrographique

0 2,5 5 10 Km

Sources: d'après UE-SOeS, CLC, 2006 44 postes en IDF et Loiret; réseaux et limites IAU-IDF; limite administratives de la RBFG N.Laffitte d'après les limites communales IAU-IDF 2008

Ech. num: 1:300 000
 Ech. éd: 1 :217 391
 Auteur: Nora Laffitte, 2011